

LOS CABOS OFFSHORE TOURNAMENT 2017**THURSDAY OCTOBER 19****REGISTRATION**

3:00-7:00pm Registration and distribution of team bags in front of Puerto Paraiso Mall.

7:00pm Captains Meeting, Puerto Paraiso Mall. One team member must attend.

7:30-9:00pm Kick-Off Cocktail Party.

FRIDAY AND SATURDAY OCTOBER 20-21**FISHING DAYS 1 & 2**

8:00am Shotgun Start.

8:00am-5:00pm Tournament Fishing; lines must be out of the water by 5:00pm.

2:00pm-9:00pm Weigh Station is open in front of the Puerto Paraiso Mall.

SUNDAY OCTOBER 22**AWARDS CELEBRATION**

7:00pm Awards Celebration at Maria Corona Restaurant.

MONDAY OCTOBER 23**Bisbee's 2nd Annual Pub Crawl:**

Meet at Baja Cantina 5:00 pre-party, and gear up. Depart Baja Cantina and head to the parade at 6:00pm



Kick-off parties and awards banquets for both tournaments sponsored by San Matias Tequila. A mixologist will be providing limited free drinks.

**BISBEE'S BLACK & BLUE MARLIN JACKPOT TOURNAMENT 2017****TUESDAY OCTOBER 24****REGISTRATION**

3:00pm-7:00pm Registration and distribution of team bags in front of Puerto Paraiso Mall.

7:00pm Captains Meeting, Puerto Paraiso Mall. One team member must attend.

7:30pm Opening Ceremonies begin: Flag Honors with Mexican Naval Escort, Mexican National Anthem, Pre-Colombian New Fire Dance, Lighting of the Tournament Torch, Japanese Taiko Drums, Music by Cabomax.

WED., THUR. & FRI. OCTOBER 25 - 27**FISHING DAYS 1,2,3**

8:00am Shotgun Start.

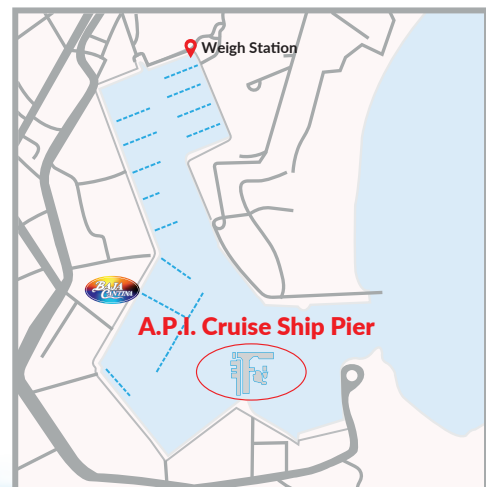
8:00am-5:00pm Tournament Fishing; lines must be out of the water by 5:00pm.

2:00pm-9:00pm Weigh Station is open in front of the Puerto Paraiso Mall, boats inside the harbour entrance by 9:00pm can weigh.

SATURDAY OCTOBER 28**AWARDS CELEBRATION**

6:00pm at A.P.I. Cruise Ship Pier Awards Celebration begins with cocktails followed by dinner and a big screen presentation of the tournament video.

Evening Entertainment: David Pack's "Legends Live" Benefit concert. Hosted by Bisbee's Fish & Wildlife Conservation Fund. Concert, Raffle and Silent Auction benefit the Green Scholarship Program, Hope for Los Cabos Organization, and our BF&WCF offshore tagging program.



GENERAL TOURNAMENT INFORMATION

EARLY BIRD DRAWING

Each tournament has an Early Bird Drawing. The winner of the drawing gets a free entry to the following year's tournament. To be eligible your paid entry (base entry only) must be received by the Early Bird Deadline. The Early Bird Deadline is the same every year. For the East Cape Offshore it is June 30, for the Los Cabos Offshore and Black & Blue it is August 31. The earlier you enter the more chances you have to win. For example, if we receive your entry to the Black & Blue in August, one chip is thrown into the pot. If we get your entry in July, you get two chips, in June, three chips, etc. The free entry is good for the following year only and is non-transferable.

ENTRY & PAYMENT DEADLINES**EAST CAPE OFFSHORE**

- Jun 30: Deadline for entry into the Early Bird Drawing.
- Jun 30: Last day to withdraw and receive full refund.
- Jul 21: Check payments must be received by this date.
- Aug 1: Last day to enter the tournament.

LOS CABOS OFFSHORE

- Aug 31: Deadline for entry into the Early Bird Drawing.
- Aug 31: Last day to withdraw and receive full refund.
- Oct 6: Check payments must be received by this date.
- Oct 19: Last day to enter the tournament.

BLACK & BLUE

- Aug 31: Deadline for entry into the Early Bird Drawing.
- Aug 31: Last day to withdraw and receive full refund.
- Oct 6: Check payments must be received by this date.
- Oct 24: Last day to enter the tournament.

ENTRY PROCEDURE OUTLINE

1. Complete and submit Entry Form.
2. We will email the Team Contact a confirmation of receipt and give you an entry number.
3. Make payment – reference name of boat or entry number on check or wire transfer instructions. Payment does not have to accompany the entry form, but to be eligible for the Early Bird Drawing the base entry must be received by the deadline date. YOUR BOAT NAME & NUMBER MUST ACCOMPANY ANY FORM OF PAYMENT.

4. You can enter Jackpots at any time up to the actual day of final Registration.

5. We will email the Team Contact to verify receipt of payments.
6. Make your reservations for a boat and place to stay if necessary. The tournament is not involved in this, but may be able to help. Just let us know.
7. Come to Registration where you will check in, verify and add to/change your team information, enter additional jackpots, make payments, pick up your team information (rules, scorecards, etc.), pick up your team bags and attend the Captain's Meeting.

ENTRY APPLICATION

Entry forms in PDF format may be downloaded from the Bisbee's website (www.bisbees.com) and may also be requested by emailing info@bisbees.com or can be found in Bisbee's Marlin World Magazine. Completed entry forms and payments should be mailed to the address on the back of the Entry Form or emailed to info@bisbees.com.

METHODS OF PAYMENT

We strongly advise you pay entry fees before you arrive in Mexico. Fees may be paid by personal or business check drawn on a US bank, wire transfer, cashier's check or traveler's check in US Dollars (USD) or Mexican Pesos (MNP). You can also pay online at www.bisbees.com. We do not accept credit cards unless payment is made via the internet. If your bank is outside of the US please wire funds instead of sending a check. Cashier's checks drawn on a US bank and Traveler's checks are the only form of payment accepted in Mexico unless previous arrangements have been made. Make checks payable to Black & Blue Tournaments. Email tricia@bisbees.com for wire transfer details.

WITHDRAWAL FROM THE TOURNAMENT

All withdrawals must be submitted in writing. If the withdrawal is received by the tournament's Early Bird Deadline a full refund is made. Between the Early Bird Deadline and the day of Registration only the portion of entry fees allocated to cash awards is refunded (100% of optional fees are refunded).

Once tournament fishing starts there are no refunds for any reason whatsoever.

GENERAL TOURNAMENT INFORMATION

fish of the day. Team A would win all of the cash for that day in the \$500 Daily Jackpot only. Team B would win all of the cash for that day in the \$1,000, \$2,000, etc. Daily Jackpots.

GAMEFISH JACKPOTS (TUNA & DORADO)

The amount allocated to the Gamefish Daily Jackpot is first split evenly between the two species, then split evenly between the days of competition. Of the amount allocated to cash awards for any particular day, one hundred percent is awarded to the teams that catch the heaviest qualifying tuna and dorado that are also entered in the Daily Gamefish Jackpot. If there is no winner on a particular day the prize money for that day rolls to the following day, unless it is the last day of the tournament in which case it rolls backwards to the largest fish caught in the category. If there are no qualifying fish caught of a particular species throughout the entire tournament, the money for that species rolls to the other species on a day by day basis. **EXAMPLE:** If a qualifying dorado is caught every day, but no qualifying tuna are caught at all, the day one tuna jackpot money rolls to the day one dorado, the day two tuna jackpot money rolls to the day two dorado and the day three tuna jackpot money rolls to the day three dorado.

ENTRY LEVELS, FEES & AWARDS US\$

EAST CAPE OFFSHORE

Tournament Base Entry:	\$1,500
Release Division:	\$2,000
\$500 Daily Jackpot:	\$1,500
\$1,000 Daily Jackpot:	\$3,000
\$2,000 Daily Jackpot:	\$6,000
Gamefish Daily Jackpot:	\$3,000
Across the Board:	\$17,000

LOS CABOS OFFSHORE

Tournament Base Entry:	\$1,500
Release Division:	\$2,000
\$500 Daily Jackpot:	\$1,000
\$1,000 Daily Jackpot:	\$2,000
\$2,000 Daily Jackpot:	\$4,000
Gamefish Daily Jackpot:	\$2,000
Across the Board:	\$12,500

BLACK & BLUE

Tournament Base Entry:	\$5,000
Release Division + Entry:	\$2,000
Release Division Only:	\$2,500
\$500 Daily Jackpot:	\$1,500
\$1,000 Daily Jackpot:	\$3,000
\$2,000 Daily Jackpot:	\$6,000
\$3,000 Daily Jackpot:	\$9,000
\$5,000 Daily Jackpot:	\$15,000
\$10,000 Daily Jackpot:	\$30,000
Across the Board:	\$71,500

OPTIONAL: \$20,000 Daily "Chupacabra Challenge": \$60,000

BISBEE'S EAST CAPE & LOS CABOS OFFSHORE

Fees for the Daily Jackpots vary between the East Cape (ECO) and Los Cabos (LCO) because there are three days of fishing in the ECO and only two days of fishing in the LCO.

The Tournament Entry Fee is \$1,500 per team. Teams receive merchandise for four team members. Additional merchandise may be purchased at the event. Tournament awards are based on the Tournament Entry Fees. Of the seventy percent allocated to awards, sixty percent (60%) goes to Billfish Awards, twenty percent (20%) goes to Top Tuna and twenty percent (20%) goes to Top Dorado.

Top Tournament Teams — Billfish

Cash prizes are awarded to the top three teams based on the single heaviest qualifying black or blue marlin as follows:

Three winners 65.0%/22.5%/12.5%;
Two winners 71.25%/28.75%; One winner takes all. If there are no qualifying marlin weighed, the prize money rolls equally to the Gamefish category and is awarded to the top tuna and/or dorado.

Top Tournament Teams — Gamefish (Tuna & Dorado)

Cash prizes in these categories are awarded to the top teams based on the single heaviest qualifying tuna and dorado. If there is no winner in one of the Gamefish categories, the prize money rolls to the other Gamefish category. If there are no qualifying tuna or dorado weighed, the prize money in these categories rolls to the Billfish category and is awarded to the top billfish teams.

DAILY JACKPOTS (optional)

There are five optional, 85% return, Daily Jackpots. Fees are per boat, per day, and you must enter all days: \$500 Daily Jackpot (ECO-\$1,500/LCO-\$1,000), \$1,000 Daily Jackpot (ECO-\$3,000/LCO-\$2,000), \$2,000 Daily Jackpot (ECO-\$6,000/LCO-\$4,000) and the \$1,000 Gamefish Daily Jackpot (ECO-\$3,000/LCO-\$2,000).

OTHER TOURNAMENT AWARDS

Trophies are awarded to the top three teams that accumulate the most billfish release points.

BISBEE'S BLACK & BLUE MARLIN TOURNAMENT

Teams must enter either the Tournament Base Entry (\$5,000) or the Release Division (\$2,500), or teams may enter both for \$7,000.

TOURNAMENT BASE ENTRY

The Tournament Entry Fee is \$5,000 per team. On the day of Registration the

GENERAL TOURNAMENT INFORMATION

Teams receive merchandise and wristbands for entry to the Awards Celebration for four team members. Additional merchandise and wristbands may be purchased at the event. Overall Tournament Awards are based on the Tournament Entry Fee. Of the fifty percent allocated to awards, forty percent (40%) goes to the Overall Tournament Team Awards and sixty percent (60%) goes to the Overall Tournament Jackpot Winners and Top Captains. Of the amount allocated to the Tournament Jackpot and Top Captains, ninety percent (90%) goes to the Tournament Jackpot and ten percent (10%) goes to Top Captains.

Top Tournament Teams

Cash prizes are awarded to the top five teams that accumulate the most billfish weight points.

OVERALL TOURNAMENT TEAMS

DISTRIBUTION BASED ON NUMBER OF WINNERS

	5	4	3	2	1
1st	50.00%	51.50%	55.00%	65.00%	100.00%
2nd	20.00%	21.50%	25.00%	35.00%	
3rd	15.00%	16.50%	20.00%		
4th	9.00%	10.50%			
5th	6.00%				

Tournament Jackpot

Cash prizes are awarded to the top three teams based on the single heaviest qualifying black or blue marlin as follows: Three winners 65.0%/22.5%/12.5%; Two winners 71.25%/28.75%; One winner takes all.

Top Captains

Cash prizes are awarded to the top three Captains who accumulate the most billfish weight points as follows: Three winners 65.0%/22.5%/12.5%; Two winners 71.25%/28.75%; One winner takes all.

RELEASE DIVISION

The Release Division is \$2,500 per team

with an 85% return. If you enter the Release Division ONLY, you cannot enter any of the Daily Jackpots.

Top Release Teams

Cash prizes are awarded to the top three teams that accumulate the most billfish release points as follows: Three winners 65.0%/22.5%/12.5%; Two winners 71.25%/28.75%; One winner takes all.

DAILY JACKPOTS (optional)

There are six optional, 85% return, Daily Jackpots. Fees are per boat, per day, and you must enter all three days: \$500 Daily Jackpot (\$1,500), \$1,000 Daily Jackpot (\$3,000), \$2,000 Daily Jackpot (\$6,000), \$3,000 Daily Jackpot (\$9,000), \$5,000 Daily Jackpot (\$15,000) and \$10,000 Daily Jackpot (\$30,000).

TOURNAMENT RULES

Updated July 2, 2013

Rules, including published rules in print or on the Bisbee's website (www.bisbees.com), are subject to change without notice. Current instructions are given at the Captain's Meeting for each event, where attendance by at least one team member is mandatory. By entering one of the Black & Blue Tournaments and paying the entry fee, participating anglers, captains, crews and guests ("Participants") agree to abide by the rules. Bisbee's Black & Blue Tournaments expects the highest level of integrity and sportsmanship from its Participants. Refer to Schedule of Events for time and location of Captain's Meetings. Except where noted, the following information and rules apply to all three events.

1. Rules Acceptance

It is the sole responsibility of the participating anglers, captains, crews and guests ("Participants") to know and abide by the Tournament Rules as published and as amended during the Captain's Meeting. Participants agree to accept all Tournament Rules and accept that decisions made by the Rules Committee are final.

2. Nature of Tournament

The Bisbee's Tournaments are fishing competitions. Participants enter at their own risk, and understand the possibility exists that there may be no winners if no qualifying fish are caught.

3. Tournament Start

The official start of each fishing day is a "Shotgun Start" where boats line up and wait for the firing of the start flare. Boats must be behind the start line 15 minutes prior to the Shotgun Start. Any boat not clearly behind the start line at this time is disqualified from the day's fishing. Boats disqualified for this violation a second time are disqualified from the entire event, and the team forfeits any and all entry money, prizes or prize money. The start line is defined at the Captain's Meeting.

4. Bait Fishing Prior to Tournament Start

Teams may attempt to catch or purchase bait until 15 minutes prior to the official start time. At this time, all fishing lines and teasers must be removed from the water and nothing may be transferred between boats.

continued

TOURNAMENT RULES

5. Fishing Days and Times

East Cape Offshore:

Wednesday, Thursday, Friday
7:00am–4:00pm

Los Cabos Offshore:

Saturday, Sunday 8:00am–5:00pm

Black & Blue:

Wednesday, Thursday, Friday
8:00am–5:00pm

A fish hooked prior to end of fishing may be fought until boated, released or lost provided the team arrives at the weigh station prior to its closing for the day if they have a fish to weigh or release to report. The Rules Committee reserves the privilege of changing starting and ending fishing times to coincide with weather, tides, and improved probability of better fishing conditions.

6. Extending Fishing Time

Fishing time will not be extended during the tournament unless all teams are included and no qualifying fish have been caught.

7. Weather and “Complete Tournament”

The Rules Committee may cancel any tournament fishing day if, in their best judgment, unsafe conditions exist at sea. Resumption of fishing is announced by 6:00am the following morning on the tournament’s VHF radio channel. A resumption of fishing announcement by the Rules Committee does not ensure the safety of any participant. Whether or not to fish must be based solely on the team’s own judgment taking into consideration the prevailing conditions, the seaworthiness of their vessel, and the crew’s seamanship skills. All attempts will be made to fish as many days as possible, but as little as one day of fishing or any part thereof constitutes a

complete tournament. Black & Blue and East Cape Offshore: If a scheduled day of fishing must be canceled, Saturday automatically becomes a fishing day. Los Cabos Offshore: Due to the scheduling between the Los Cabos Offshore and the Black & Blue, if a scheduled day of fishing must be canceled the other day will become the only fishing day.

8. Cancellation of Entire Tournament

In the event a tournament must be canceled prior to any portion of the scheduled fishing days, the portion of Entry Fees and Optional Jackpot monies that were allocated for cash awards are refunded by check within four weeks to the Team Contact—one check per team. Teams may choose to roll their refund to the following year’s event.

9. No Qualifying Fish Caught — Refunds

In the event no qualifying fish are caught during the tournament the portion of the optional Daily Jackpot monies that were allocated for cash awards are refunded by check within four weeks to the Team Contact—one check per team. There is no refund of Base Entry Fees. Teams may choose to roll their refund to any of the following year’s events.

10. Hand-Offs Between Vessels

Between the tournament’s fishing hours, no vessel entered in the tournament may be involved in the handing off or receiving of anything from another vessel whether that vessel is entered in the tournament or not, or any other entity of any sort including bait receivers. The Rules Committee may choose to grant special permission in advance to waive this rule if someone’s personal safety or health is at risk.

11. Boundaries and Grid Maps

East Cape Offshore:

50 mile radius from host resort.

Black & Blue and Los Cabos Offshore:

40 mile radius from CSL.

Teams are required to fish within the boundaries laid out by the Tournament’s Grid Map, and to call in the grid location of every hook-up.

12. Communications and Tournament Standings

The VHF radio channels, backup channels and telephone numbers used to contact Radio Control and Tournament Officials are provided during the Captain’s Meeting and in the Team’s information envelope handed out during Registration. Tournament standings are broadcast every morning over the radio, and fish weights are announced as fish are weighed.

13. Eligible Species & Points

(see chart on opposite page)

14. Penalty Points and Disqualification

Black or blue marlin weighing less than 300 lbs. are not eligible for cash awards. Black or blue marlin weighing less than 300 lbs. are awarded zero points and additionally penalized 25 points plus two points for every pound under 300. EXAMPLE: A 290 lb. blue marlin would be awarded 0 points and be penalized 25 points plus 20 points (2pts. x 10lbs.), making the total points for the fish -45. The negative points are deducted from the team’s overall weight points. East Cape and Los Cabos: Tuna weighing less than 40 lbs. and Dorado weighing less than 30 lbs. are disqualified.

TOURNAMENT RULES

SPECIES	PTS / POUND	PTS / RELEASE	MINIMUM	LIMIT TO WEIGH
---------	-------------	---------------	---------	----------------

BLACK & BLUE MARLIN TOURNAMENT

Blue Marlin	1 (one)	300	300 lbs	1 / angler / day and 2 / boat / day
Black Marlin	1 (one)	300	300 lbs	1 / angler / day and 2 / boat / day
Striped Marlin	n / a	0	release only	n / a
Sailfish	n / a	0	release only	n / a
Spearfish	n / a	0	release only	n / a

EAST CAPE AND LOS CABOS OFFSHORE

Blue Marlin	1 (one)	300	300 lbs	1 / angler / day and 2 / boat / day
Black Marlin	1 (one)	300	300 lbs	1 / angler / day and 2 / boat / day
Striped Marlin	n / a	100	release only	n / a
Sailfish	n / a	100	release only	n / a
Spearfish	n / a	100	release only	n / a
Dorado	1 (one)	n / a	30 lbs	1 / team / day
Tuna	1 (one)	n / a	40 lbs	1 / team / day

15. Official Billfish Release

A billfish is considered officially released when the leader connection is wound to the tip of the rod, or the mate or other crew member touches the leader. If you are releasing the billfish, do not remove it from the water.

16. Reporting Catch to Radio Control and Official Time

When a fish is hooked, captains must report to Radio Control the Boat Name, Angler Name, Grid Area and Species. The boat captain must again report to Radio Control when the fish is lost, released or boated. In addition, fish still being fought at lines out must be reported to Radio Control. Times are recorded to the whole minute. The time recorded by Radio Control is the official time. Any team member intentionally reporting wrongful information to Radio Control for the purpose of altering tournament standings or results is disqualified from the event, and forfeits any and all entry money, prizes or prize money.

17. Recording Billfish on Scorecards

Scorecards are compared to radio logs for verification. Scorecards must be filled in legibly and completely, and signed by the

Boat Captain indicating they agree to the information as recorded. Instructions are also printed on the scorecard. All billfish released or boated must be recorded on the Billfish Scorecard (you do not need to record gamefish on the scorecard). You must use a separate scorecard for each day (see Rule #19). Any team intentionally recording wrongful information on the scorecards for the purpose of altering tournament standings or results is disqualified from the event, and forfeits any and all entry money, prizes or prize money.

18. Billfish Release Photo Verification

Teams must verify their catch by taking DIGITAL PHOTOS of billfish as they are released. The photos must show the billfish next to the boat, and identify the billfish species. If the species cannot be positively identified no points are awarded. Teams are expected to provide their own digital cameras and make sure the date and time on the camera is correct. **The procedure is:**

A) Radio Control will announce the Verification Object at the beginning of each fishing day. A picture of the object must be taken before any billfish photos are taken for the day. If the verification

object is missing from the camera any billfish released on that day are disqualified.

B) A "separator" photo must be taken in between each billfish. All you need to do is a finger count. For example, after releasing your first fish hold up 1 finger. After releasing your second fish hold up 2 fingers.

C) Cameras must be handed in at the Weigh Station where the digital media is removed from the camera and downloaded onto the tournament's laptop computer, then returned. You have two choices as to when to turn in your photos: **1.** You may turn in your photos day by day at the Weigh Station **or 2.** You may wait until the last day and only turn in your photos if you feel you are in the running (unofficial release standings are announced each morning).

D) Release photos are reviewed at Tournament Headquarters. Judging does not take place at the weigh station.

E) Any release photos posted on the website are for entertainment purposes only, and not all release photos are posted.

TOURNAMENT RULES

19. When & Where to Turn in Scorecards

Scorecards must be turned in at the Weigh Station before it closes for the day on the same day the fish was caught. A new scorecard is given to you for the next day. If you did not catch a billfish you do not have to turn in a scorecard.

20. Weigh-In Procedures

Upon the weigh station opening each fishing day, fish will be weighed in the order of boat arrival to the weigh station unloading dock. Should more than one boat be at the weigh station prior to opening, the fish will be weighed in the order of their official catch time per the radio control log from the earliest catch to most recent. All fish must be weighed at the tournament's official weigh station. Weigh station officials will continue to weigh fish for all boats that arrive prior to the following deadlines:

East Cape Offshore:

Must be in front of the weigh station by 7:00pm all three days.

Los Cabos Offshore:

Must be inside of the harbor jetties by 8:00pm Saturday and 7:00pm Sunday*.

Black & Blue:

Must be inside of the harbor jetties by 9:00pm all three days*.

* As verified by a tournament observer at the jetties.

Additional Rules:

A) ANY marlin brought onboard a boat must be weighed. A fish is considered "onboard" when more than 50% of the fish is inside the boat.

B) Weighed fish become the property of the tournament.

C) A team intentionally mutilating a fish

for the purpose of altering tournament standings or results is disqualified from the event and forfeits any and all entry money, prizes or prize money.

D) Fish must be brought to the scales on the boat on which they were caught.

E) Fish to be weighed must be presented to the weigh station on the same day they are caught.

F) The angler must remain with the fish throughout the weigh-in.

G) Before leaving the scales, the angler must verify weight information, sign the Weigh-In form and provide a telephone number where they can be reached.

H) The rod, reel, line, leader, lure and hook(s) must accompany each fish to be weighed and presented to the Weighmaster.

I) Any fish brought to the weigh station may have its mouth sealed closed. However, once the Weighmaster has raised the fish on the scales the angler is asked to remove whatever is sealing the mouth closed and clip any external leader material to the outer edge of the fish's mouth. Except for artificial lures, nothing will be pulled from inside the fish. Whatever may fall from the fish due to gravity remains out when determining the fish's weight.

21. Breaking Ties

Ties between the weights of two or more fish are broken by the time the fish was weighed. Ties between release points are broken by the time of release as recorded on the radio logs. Times are recorded to the whole minute.

22. Polygraph Examination

One person from each team that is receiving a cash award must complete a polygraph examination. This person must have been directly involved with either the release or the capture of the fish (angler, captain or wireman). The

final selection of the person to receive the examination is made by Tournament Officials. Examinees must be sober at the time of the examination.

Failure to comply, or failing the examination, results in disqualification of the entire team and the team forfeits any and all entry money, prizes or prize money.

23. Release of All Claims

This section must be carefully read by each Participant.

In consideration for being accepted by the Tournament Organizers/Rules Committee for participation in Bisbee's Black & Blue Marlin Tournament, Bisbee's East Cape Offshore Tournament or Bisbee's Los Cabos Offshore Charity Tournament ("the Tournament"), the Participants hereby release, forever discharge, and agree to hold harmless the Tournament, Tournament Promotions, Inc., Tournament Control, Inc., and their respective officers, directors, employees, agents, volunteers, partners, members, and/or attorneys (collectively the "Releasees") for any and all losses, claims, or demands of any kind or character whatsoever arising from the negligence or gross negligence of the Releasees or from any other cause connected with or occurring during the Tournament. The Participants expressly acknowledge that he/she has received, reviewed, and agrees to abide by the Tournament Rules and this Release. Furthermore, the Participants expressly acknowledge that activities relating to deep sea fishing are extremely dangerous and involve the risk of serious injury or death. Having so acknowledged, the Participants hereby

TOURNAMENT RULES

assume full responsibility for the risk of bodily injury or death due to the negligence or gross negligence of the Releasees or any other cause connected with or occurring during the Tournament.

24. Disputes/Protests

All disputes, protests, claims, differences or controversies relating to any aspect of the Tournament, including, without limitation, Tournament Rules, must be submitted in writing to the Tournament Organizers/ Rules Committee no later than twelve (12) hours following the official closing of the Tournament Weigh Station on the day the supposed infraction occurred or are deemed waived. All such disputes shall be decided by the Tournament Organizers/ Rules Committee and shall be final and

binding upon all parties.

25. Binding Arbitration

In the event the Tournament Organizers/ Rules Committee cannot render or refuses to render a final and binding decision with respect to any dispute, claim, difference, or controversy under review, the matter shall be resolved by binding arbitration under the commercial arbitration rules of the American Arbitration Association. The decision rendered in arbitration shall be in writing and shall be final and binding upon all parties. The parties shall have no further recourse, except as provided for by the commercial rules of the American Arbitration Association. Once the decision is rendered, it will produce the effect of "res judicata" and the parties shall fully

comply with the decision without delay. The Participants specifically waive any right to a trial by judge or jury.

26. Participation

The Participants specifically agree and consent to the use of any photograph, motion picture, or audio recording in which they appear or are heard, by the Tournament, Tournament Promotions, Inc. or Tournament Control, Inc. for any purpose whatsoever including, but not limited to, resale, advertising, and promotional material without compensation or restriction of any kind.

ANGLING & EQUIPMENT RULES

The Bisbee's tournaments are "Team" tournaments

ANGLING RULES

1. The tournament does not regulate who may be involved in the management of, or the manipulation of, the equipment and/or tackle leading up to, during, or following the playing of a fish.
2. Once a fish is hooked, the rod/reel involved in playing the Fish must stay in physical contact with the angler(s).
3. When a fish is hooked or entangled on more than one line, the team must cut away the extra line(s) as quickly as possible.
4. From the time that a fish strikes, anyone onboard may remove other lines, teasers and devices from the water.
5. Once the leader is brought within grasp of the mate, or the end of the leader is wound to the rod tip, more than one person is permitted to touch the leader—this DOES NOT apply to the double line.
6. One or more gaffers may be used in

addition to persons holding the leader. The gaff handle must be in hand when the fish is gaffed.

THE FOLLOWING ACTS WILL DISQUALIFY A CATCH

1. Failure to comply with the Tournament's general, equipment or angling rules and regulations.
2. Resting the rod in a rod holder, on the gunwale of the boat, or any other object while playing the fish.
3. Handlining or using a handline or rope attached in any manner to the angler's line or leader for the purpose of holding or lifting fish.
4. Shooting, harpooning, or lancing any fish at any stage of the catch.
5. Chumming with or using as bait the flesh, blood, skin, or any part of mammals other than hair or pork rind used in lures designed for trolling or casting.

6. Changing the rod or reel while the fish is being played.

7. Splicing, removing, or adding to the line while the fish is being played.

8. Using a size or kind of bait that is illegal to possess.

9. Attaching the angler's line or leader to part of a boat or other object for the purpose of holding or lifting fish.

10. If a fish escapes before gaffing and is recaptured by any method other than as outlined in the angling rules.

11. When a rod breaks (while the fish is being played) in a manner that reduces the length of the tip below minimum dimensions.

12. Mutilation to the fish, prior to boating the catch, caused by sharks, other fish, mammals, or propellers that remove or penetrate the flesh. Injuries caused by leader or line, scratches, old healed scars or regeneration deformities are not considered disqualifying injuries.

ANGLING & EQUIPMENT RULES

EQUIPMENT RULES

Two pages of diagrams follow to help clarify these rules. Anglers are responsible for their own bait. Any lures, teasers or bait may be used as approved by these rules and the Illustrated Diagrams that follow.

1. FISHING LINE & BACKING

New (updated 9/2017)

a) The term "Backing" pertains to any line on the reel that precedes the "Fishing Line" whether connected to the fishing line or not. The use of backing is permissible and does not have a maximum strength limit.

The term "Fishing Line" pertains to the first 16.5 feet (5 meters) of line directly preceding the double line, leader, or hook. This section of fishing line must be comprised of a single, homogenous piece of line, and have a "Manufacturer's Stated" maximum breaking strength of 130 lbs. or less. The catch shall be classified under the breaking strength of the fishing line and must be a minimum length of the stated 16.5 feet (5 meters).

Dacron, monofilament, multifilament, and lead core multifilament lines may be used on either. Line by the trade name of Spectra is acceptable. Wire lines are prohibited.

NOTE: Due to this rule change, the tournament's previous "top-shot connection" length limit of 7 feet is no longer relevant. There is no longer a limit on the top-shot connection length.

2. Double Line

The use of a double line is not required. If one is used, it must meet the following specifications:

a) A double line must consist of the actual line used to catch the fish.

b) Double lines are measured from the start of the knot, braid, roll or splice making the double line to the farthestmost end of the knot, splice, snap, swivel or other device used for securing the trace, leader, lure or hook to the double line.

c) In all line classes up to and including 20 pounds, the double line shall be limited to 15 feet. The combined length of the double line and leader shall not exceed 20 feet.

d) The double line on all classes of tackle over 20 pounds shall be limited to 30 feet. The maximum combined length of the double line and leader is 40 feet.

3. Leader

The use of a leader is not required. If one is used, it must meet the following specifications:

a) The length of the leader is the overall length including any lure, hook arrangement or other device.

b) The leader must be connected to the line with a snap, knot, splice, swivel or other device.

c) Holding devices are prohibited.

d) There are no regulations regarding the material or strength of the leader.

e) In all line classes up to and including 20 pounds, the leader shall be limited to 15 feet. The combined length of the double line and leader shall not exceed 20 feet.

f) The leader on all classes of tackle over 20 pounds shall be limited to 30 feet. The combined length of the double line and leader shall be limited to 40 feet.

4. Rod

a) Rods must comply with sporting ethics and customs.

b) The rod tip must be a minimum of 40 inches in length. The rod butt cannot exceed 27 inches.

c) These measurements must be made from a point directly beneath the center of the reel. A curved butt is measured in a straight line.

5. Reel

a) Reels must comply with sporting ethics and customs.

b) Power driven reels of any kind are prohibited. This includes motor, hydraulic, or electrically driven reels, and any device which gives the angler an unfair advantage.

c) Ratchet handle reels are prohibited.

d) Reels designed to be cranked with both hands at the same time are prohibited.

6. Hooks — Natural Bait (Live or Dead)

a) Any hook used with natural baits, live or dead, must be a non-offset circle hook.

b) No more than two single hooks may be used. Both must be firmly imbedded in or securely attached to the bait. The eyes of the hooks must be no less than a hook's length (the length of the largest hook used) apart and no more than 18 inches apart. The only exception is that the point of one hook may be passed through the eye of the other hook.

c) The use of a dangling/swinging hook is prohibited. No double or treble hooks.

7. Hooks — Artificial Lures

a) When using an artificial lure with a skirt or trailing material, no more than two single hooks may be attached to the line, leader, or trace. The hooks need not be attached separately. The eyes of the hooks must be no less than an overall hook's length (the overall length of the largest hook used) apart and no more than 12 inches apart. The only exception is that the point of one hook may be passed through the eye of the other hook. The trailing hook may not extend

ANGLING & EQUIPMENT RULES

more than a hook's length beyond the skirt of the lure.

b) The tournament recognizes products produced by Quick Rig Corporation under the trade name "Double Trouble Hooks" as acceptable tackle to be used in the tournament.

8. Other Equipment

a) Fighting chairs may not have any mechanically propelled devices that aid the angler in fighting.

b) Gimbals must be free swinging. Gimbals that allow anglers to reduce strain or rest while fighting the fish are prohibited.

c) Harnesses may be attached to the reel or rod, but not to the fighting chair. The harness may be replaced or adjusted by a person other than the angler.

d) Rod belts or waist gimbals are permitted.

e) Gaffs used to boat a fish must not exceed 8 feet in overall length. In using a flying or detachable gaff the rope

may not exceed 30 feet. The gaff rope is measured from the point where it is secured to the detachable head to the other end. If a fixed head gaff is used, the same limitations shall apply and the gaff rope shall be measured from the same location on the gaff hook. Only a single hook is permitted on any gaff. Harpoon or lance attachments are prohibited. Tail ropes are limited to 30 feet.

f) Entangling devices, with or without a hook, are prohibited and may not be used for any purpose including baiting, hooking or fighting the fish.

g) Nets may not be used to obtain a fish.

h) Outriggers, downriggers, spreader bars and kites are permitted to be used, provided that the actual fishing line is attached to a snap or other release device, either directly or with some other material. The leader or double line may not be connected to the release mechanism either directly or with the use of a connecting device. Spreader bars are also acceptable when used strictly as a

teaser.

i) Daisy chains, birds, floats and similar devices may only be used if they do not unfairly hamper or inhibit the normal swimming or fighting ability of the fish, thereby giving the team an unfair advantage in fighting, releasing or boating the fish. Acceptability of this equipment will be determined by the Rules Committee on an individual, as needed basis.

Note: Should a team not wish to rely on a Rules Committee decision, they may opt to place a release device above the bait or lure which contains the hook(s). In this case, the release device may be attached to the double line and/or leader.

j) A safety line may be attached to the rod provided it does not in any way assist the angler in fighting the fish.

THE BUSINESS WORLD IS AN EVER-CHANGING MAP WITH NEW FRONTIERS YET TO BE EXPLORED.

Navigating your company's public relations and marketing strategy is our mission. New World Public Relations just doesn't slip your message in a bottle and hope for the best. A matter of fact, you're actually holding a sample of our work right now - this magazine! Specializing in media relations, social media campaigns (We handle all of the Bisbee's social media too), branding, magazines, search engine optimization and graphic design, New World Public Relations will get you off of your island and onto the content rich mainland!

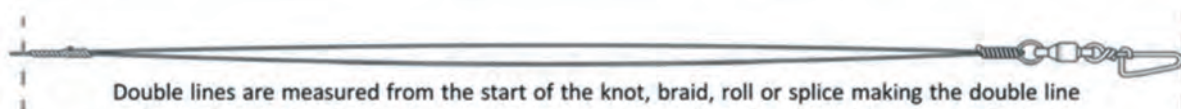
DISCOVER YOUR NEW WORLD.

To learn more, email us:
John@NWPublicRelations.com



NEW WORLD
PUBLIC RELATIONS

DOUBLE LINES & LEADERS



Double lines are measured from the start of the knot, braid, roll or splice making the double line to the farthestmost end of the knot, splice, snap, swivel or other device used for securing the trace, leader lure or hook to the double line. A double line must consist of the actual line used to catch the fish. For saltwater species, the double line shall be limited to 15 feet (4.57 meters) for all line classes up to and including 20 lb (10 kg); and shall be limited to 30 feet (9.14 meters) for line classes over 20 lb (10 kg).



The leader shall be limited to 15 feet (4.57 meters) for saltwater species in line classes up to and including 20 lb (10 kg), and 30 feet (9.14 meters) for all line classes over 20 lb (10 kg).



The length of the leader is the overall length including any lure, hook arrangements or other device.



The combined length of the double line and leader shall not exceed 20 ft (6.1 meters) in line classes up to and including 20 lb (10 kg) and 40 feet (12.19 meters) in line classes over 20 lb (10 kg) for saltwater species.

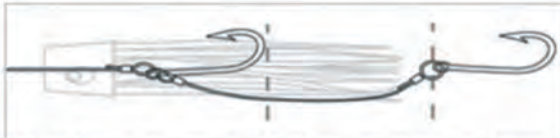
HOOKS & GAFFS



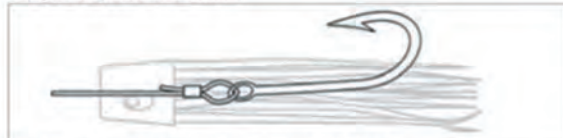
LEGAL if eyes of hooks no more than 18 inches (45.72 cm) apart in baits and no more than 12 inches (30.45 cm) apart in lures. ILLEGAL if eyes further apart than these distances.



LEGAL as eyes of hooks are no less than a hook's length apart and no more than 12 inches (30.45 cm) apart, and the trailing hook does not extend more than a hook's length beyond the skirt.



NOT LEGAL as the second or trailing hook extends more than the hook's length beyond skirt. See also two hook rigs.



LEGAL as hook is contained within the skirt.



NOT LEGAL in bait or lures as eyes of hooks are less than a hook's length (the length of the largest hook) apart.



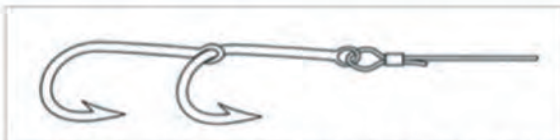
NOT LEGAL as the single hook extends more than its length beyond the skirt.



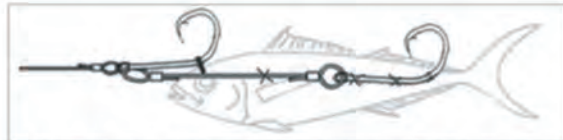
LEGAL as eyes of hooks are no less than a hook's length apart and no more than 18 inches (45.72 cm) in baits and 12 inches (30.45 cm) in lures.



NOT LEGAL as back hook is not firmly imbedded in or securely attached to bait and is a dangling or swinging hook.



LEGAL in baits and lures. The point of one hook is passed through the eye of the other hook.



LEGAL as both hooks are firmly imbedded or securely attached to bait. Would not be legal if eyes of hooks were more than 18 inches (45.72 cm) apart.

GAFFS



LEGAL on boats if effective rope length does not exceed 30 feet (9.15 meters).



LEGAL on boats if overall gaff length does not exceed 8 feet (2.44 meters).



BISBEE'S BLACK & BLUE AND LOS CABOS OFFSHORE GRID MAP

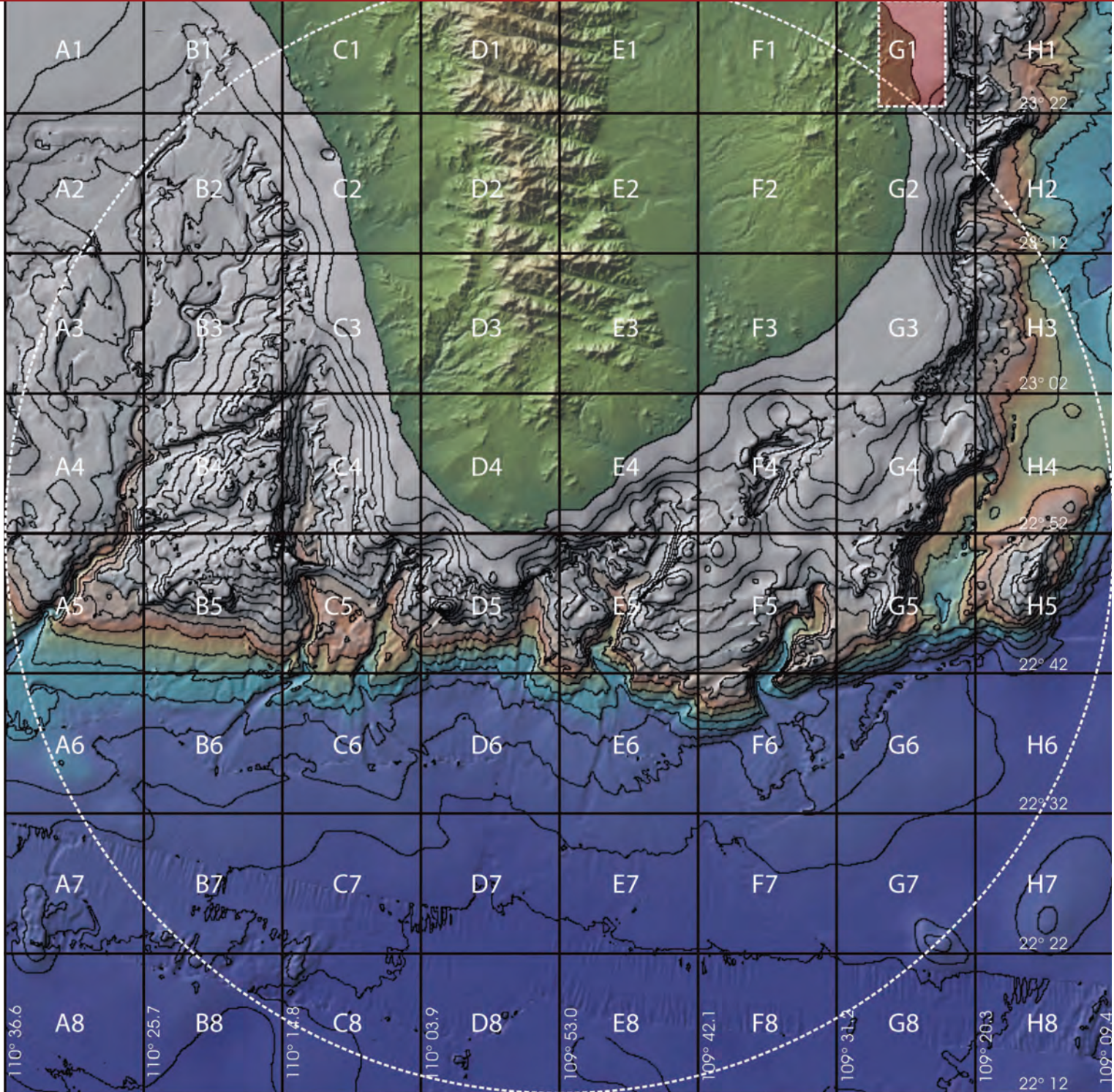
Chart provided by Hilton's Realtime-Navigator (www.realtime-navigator.com)

AREA DE PESCA PARA: LOS CABOS OFFSHORE Y BLACK & BLUE

Carta Marina, cortesía de Hilton's Realtime-Navigator (www.realtime-navigator.com)

40-mile radius surrounding Cabo San Lucas // Center Waypoint: 22° 52.0 N, 109° 53.0 W // Scale: 1 Grid = 10 Nautical Miles

Radio de 40 millas punto de partida // 22° 52.0 N, 109° 53.0 W // Escala: 1 cuadro = 10 Millas Náuticas



Please avoid the CABO PULMO NATIONAL MARINE PARK in the general area of G1,
specifically 23° 22' 30" to 23° 30' 00" N by 109° 28' 03" to 109° 23' 00" W

Favor de evitar el Parque Marino Cabo Pulmo G1,
específicamente 23° 22' 30" to 23° 30' 00" N by 109° 28' 03" to 109° 23' 00" W